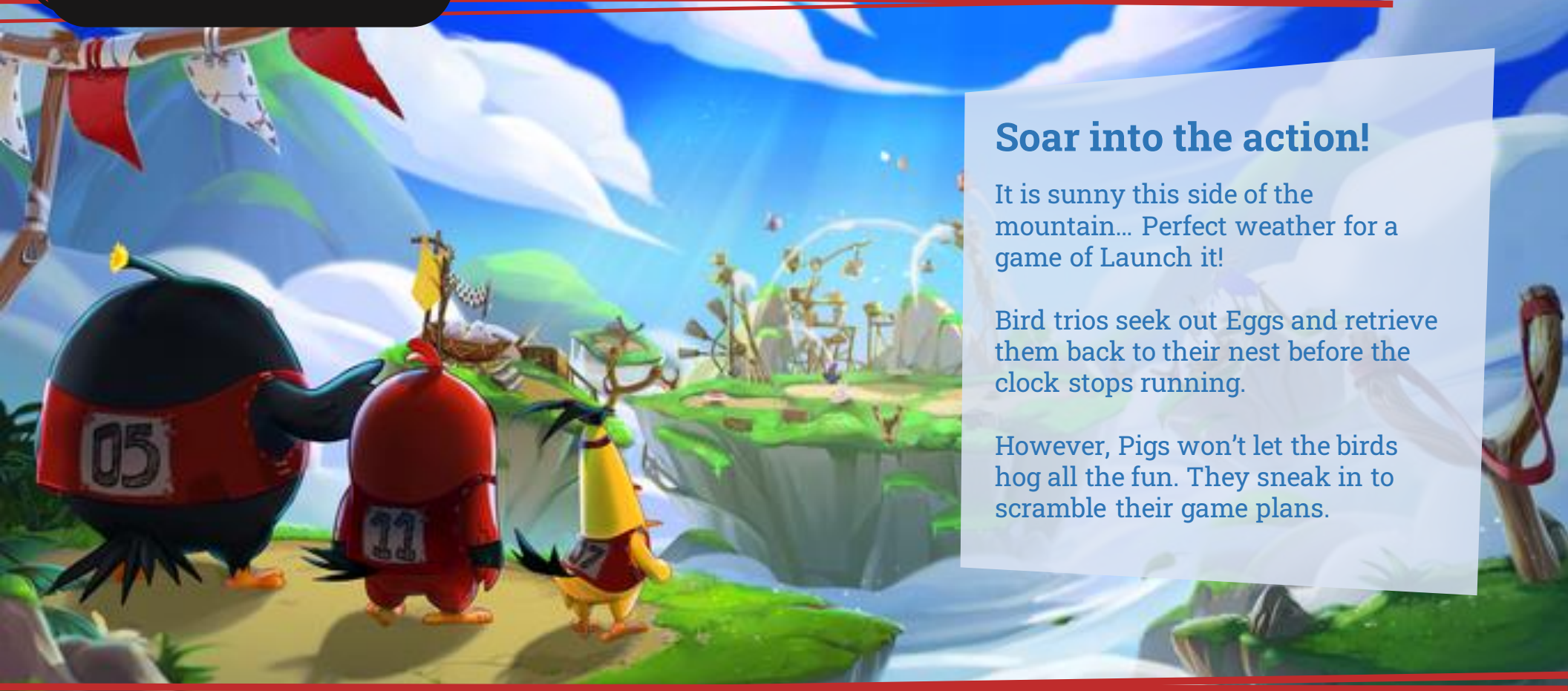


INTRO



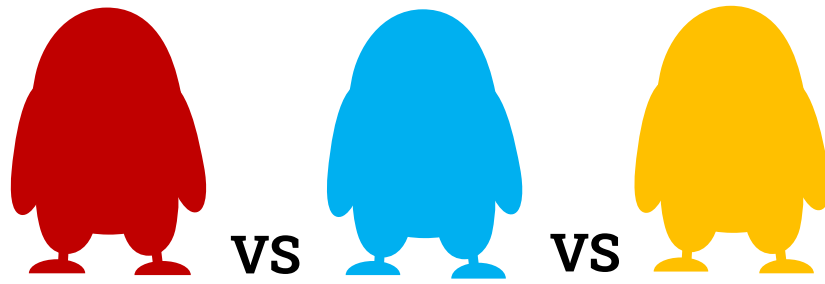
Soar into the action!

It is sunny this side of the mountain... Perfect weather for a game of Launch it!

Bird trios seek out Eggs and retrieve them back to their nest before the clock stops running.

However, Pigs won't let the birds hog all the fun. They sneak in to scramble their game plans.

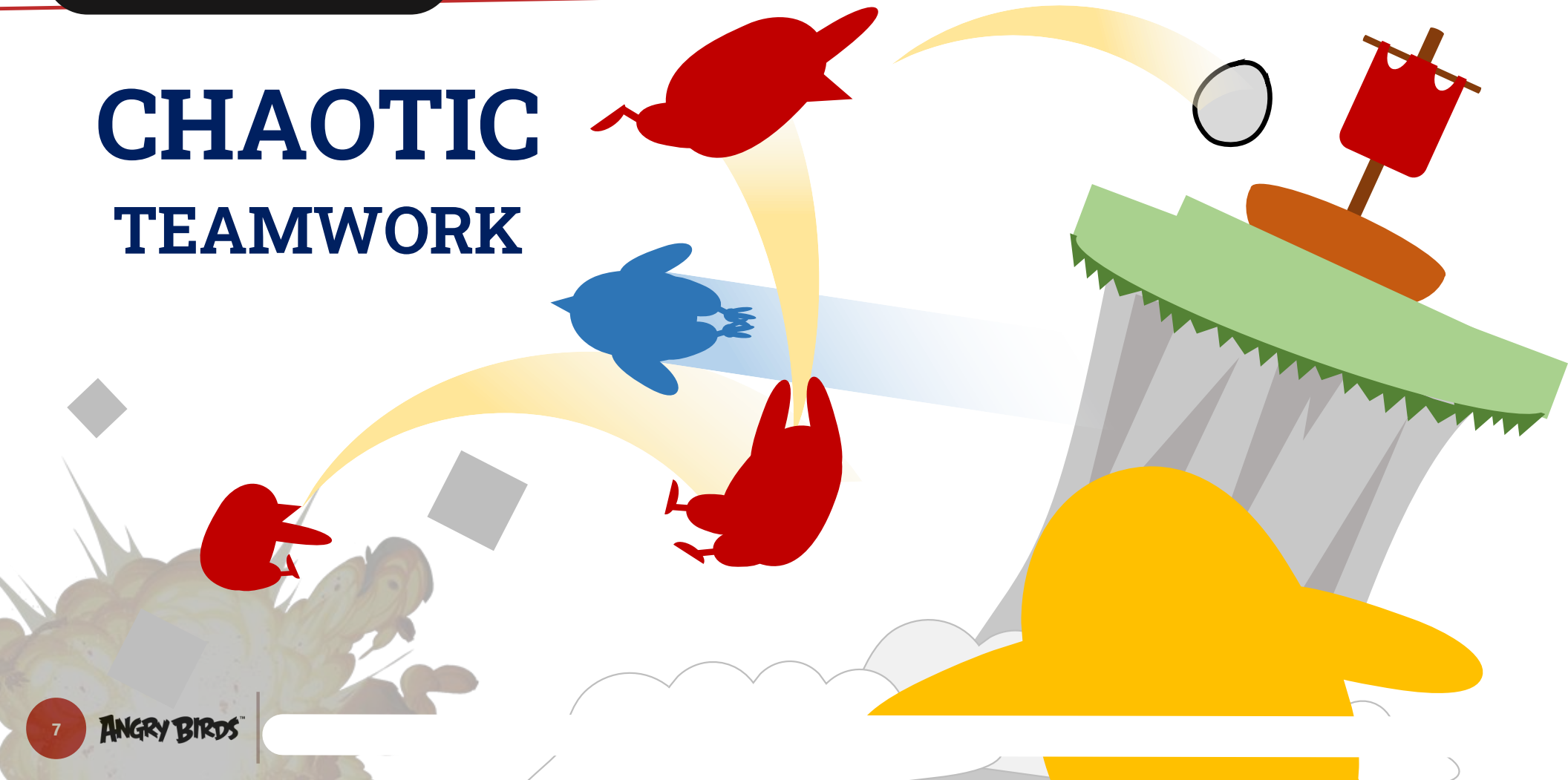
LAUNCH IT! IS:



A team-based, multiplayer game where Birds compete to find and retrieve Eggs back to their respective nest.

A GAME OF:

CHAOTIC TEAMWORK

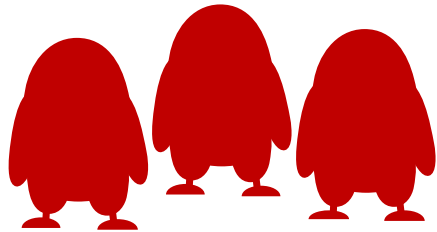


TWIST



Eliminated Bird players come back as Pigs to cause mischief.

PILLARS



TEAMWORK

Through team play, the prototype demonstrates how the game is social at its core, which shows the promise to keep games interesting for long periods of time.



CONTROLLED CHAOS

Using simple and clear game rules, the prototype offers an unpredictable experience through destruction and team strategies, without making the game feel too random.



STREAMABILITY

Fun to play, fun to watch. The core of the game must be simple so that anyone can pick it up and be able to follow the game. The prototype features a Spectator mode to showcase this aspect.

OVERVIEW



DEFAULT HUD

SCORE BOARD

TIME REMAINING

MENU

0/10
Eggs

BANKED EGGS
COUNTER

0 1 0 0 0 0

06:58

GRAB

GRAB

BHVR

3
SPAWN

SUPERJUMP

DASH

JUMP

JUMP

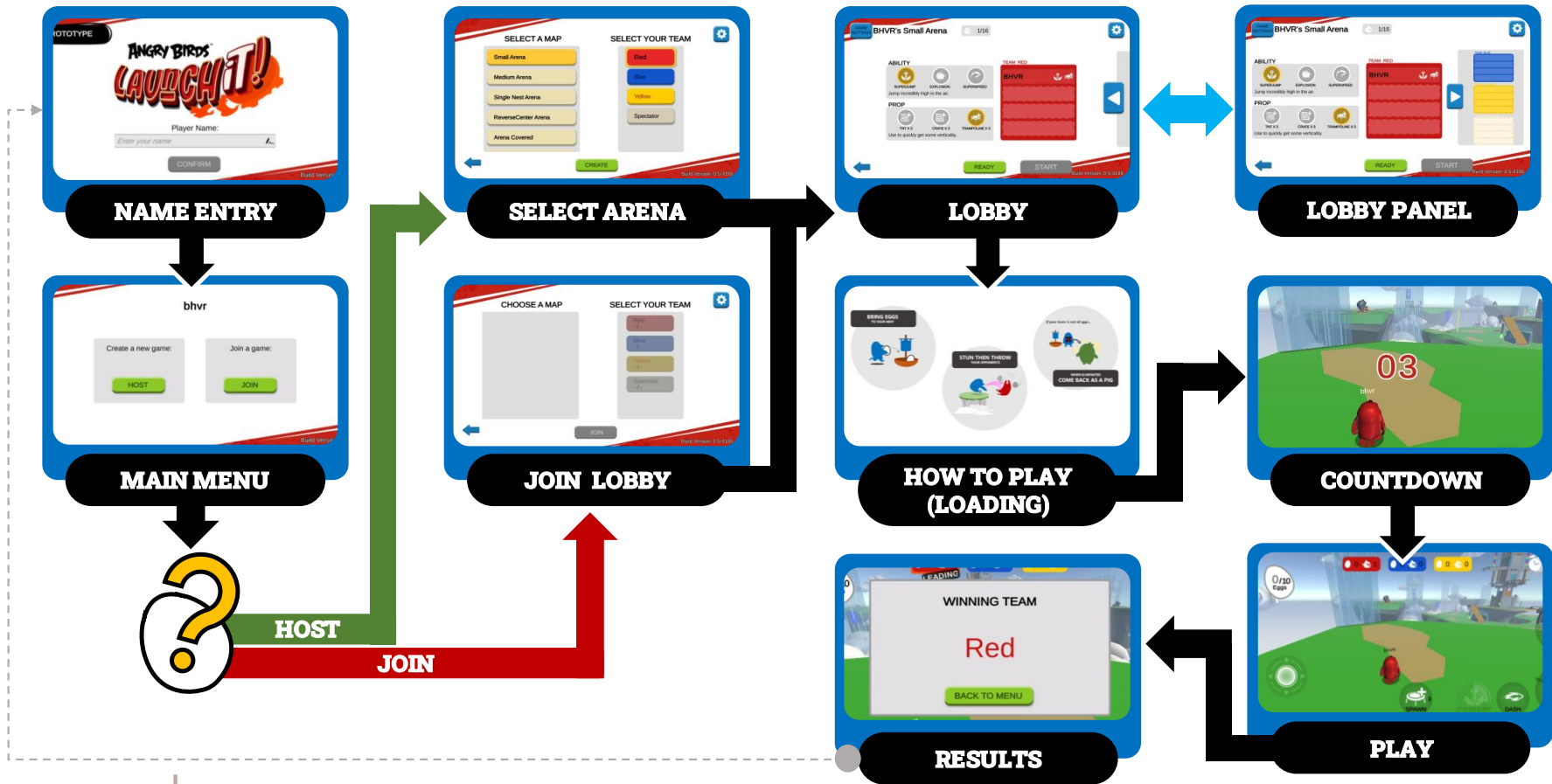
MOVE

Prop Spawn

SPECIAL
ABILITY

TACKLE

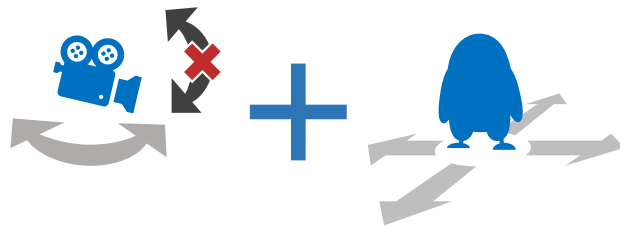
MATCH FLOW



CAMERA MODES

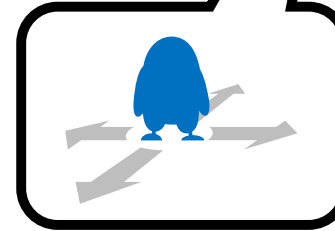
Automatic


The automatic setting is best for those who are looking for an action-oriented experience.



Manual

The manual setting is designed for those looking for more precise control but requires more dexterity.



 In both modes, you can select whether the left control stick remains fixed or moves to where your input begins.

Finding the right camera mode that's right for your style of play is important so you can feel comfortable in the middle of the action.

GAME PAD

CONTROLLER SUPPORT

To properly use a controller, make sure that in the following settings:

- Touch Pad: Off
- Automatic Camera: Off

To use a controller with a smartphone, make sure your controller can be paired using Bluetooth, and go through the pairing process.



Note that the controller layout is not final. New controller setup is being investigated.

