

# BERIT

Trousers and Vest

Design: Irene Flormann

## Photo Tutorial

### BERIT Vest

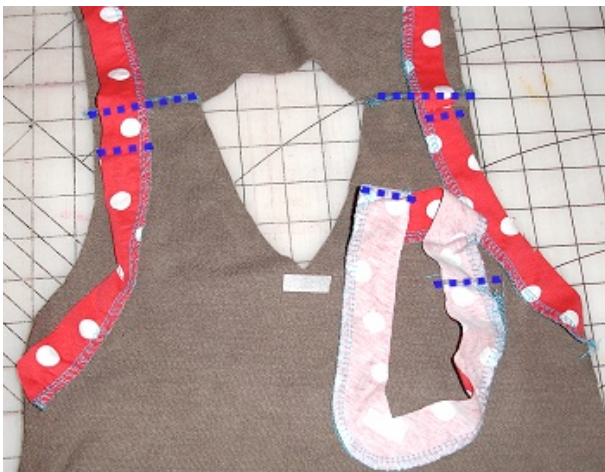
Before beginning, please compare the chest measurements against the table on the pattern sheet, and, depending on the body type, perhaps select a size smaller or larger. The neck and sleeves openings may be left unfinished if using fleece materials, as these do not fray. Alternatively, the sleeve and neck openings can be finished with bias tape or piping. When finishing the openings with facing pieces, please select a facing material with some stretch.

Please visit [www.farbenmix.de](http://www.farbenmix.de) to see many design examples.



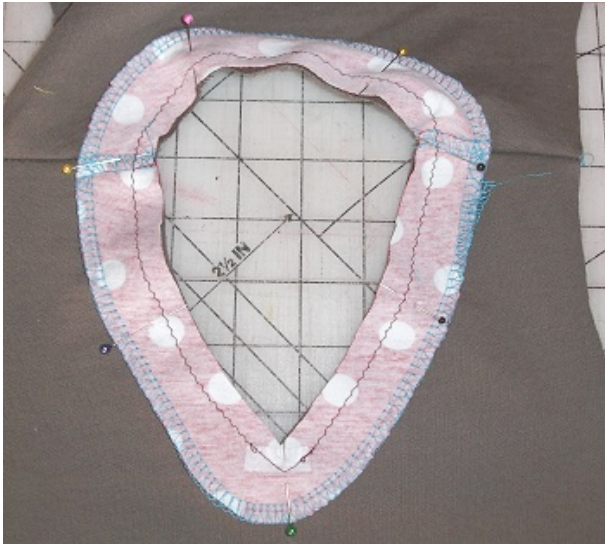
Cutting the layout:

Cut the back and front pieces. Cut  $1\frac{1}{2}$  inch to 2 inch interfacing strips to match the neck and shoulder openings.

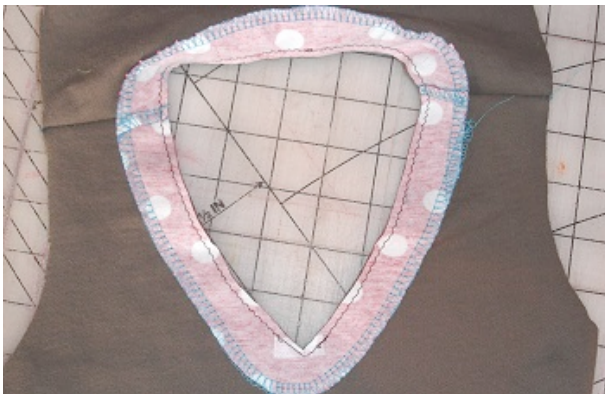


Finish the inside edges of the facing pieces. Stitch the shoulder seams of the shoulder facing pieces and the shoulder seams of the vest (do not topstitch at this time). Stitch the shoulder facing pieces to the sleeve opening right sides together.

Stitch the ends of the front neck facing piece to the back facing piece, right sides together. Finish the outside edge of the neck facing piece with an over-edge cast stitch.



Pin the neck facing right sides together around the neck opening and stitch.



Trim and grade the seam allowance for a smooth turn. Notch the V-point of the V-neck.



Turn the facing into the neck opening and topstitch using a stretch stitch, such as the three-step zig zag stitch.

Stitch the side seams.



Trim and grade the seam allowance of the shoulder facings for a smooth turn. Turn the facings, press and topstitch along the opening edge using a stretch stitch, such as the three-step zig zag stitch.

Hem the vest, also with a stretch stitch.

Your BERIT vest is complete!

### BERIT Trousers/Gacho Pants



Cut all pieces. Include a seam allowance. Finish the edges of all pieces with an over-edge cast stitch.



Stitch each of two pocket pieces right sides together along the top and along the bottom. Notch the point and turn.

Press the pocket and topstitch along the top and bottom of the pocket. Pin the pocket at the markings on the rear of the two side panels.

Alternatively, you may place and attach the pocket to the front panel in the normal manner, stitching in place along the sides and bottom.

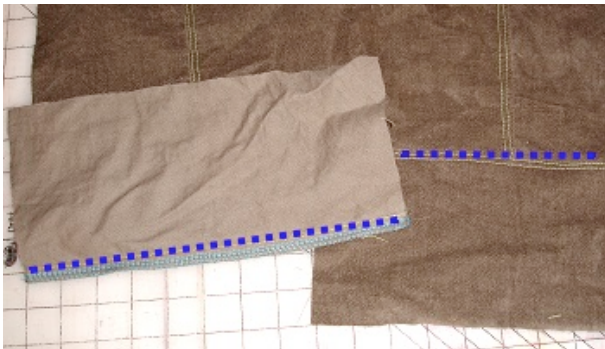




Stitch along the seam allowance to attach the sides of the pocket. Stitch a line straight across the bottom, leaving the point of the pocket to flap loosely.



Stitch the side seams.



Attach the cuff piece right sides together. Press the seam and topstitch.



For a pair of trousers (*without* the additional side panel.):

Stitch the side seams and top stitch the side seam.



For a pair of gaucho pants (*with* the additional side panel):

Cut a rectangle to length. Stitch the panel between the front and back panels of the trousers.



Press the seam with the material of the extra panel and the front and back panels wrong sides touching to make a fold along this seam. Top stitch these seams along the fold.



The material will fold inward.



Fold over the front and back panels toward the middle to form a box pleat, press and secure with pins.





Secure the box pleat with topstitching along the seam allowance at the waist edge.

Top stitch two parallel lines to the mark to close the pleat. At the mark, secure the pleat with a row of small, tight zig zag stitches.



Close the in-seams.

Hem the pant legs.



Turn one pant leg right side out and stick this pant leg *inside* the other pant leg turned wrong side out. Align the faux fly and stitch the crotch seam closed in a single movement.



Fold the faux fly inward and pin so that the fly opening is to the left of the wearer.



Top stitch from the right side (right side of the wearer; left side, if looking at the trousers) along the flap of the faux fly. Secure the bottom of this line of stitching with a row of small, tight zig zag stitches.

Alternatively, you may insert a real zipper using your preferred method.



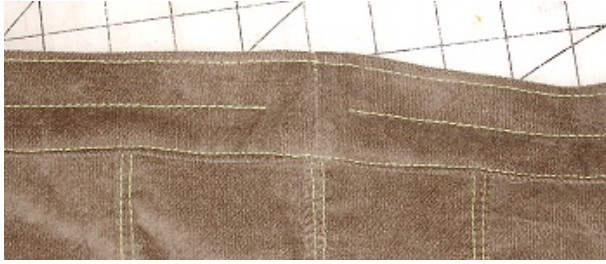
Stitch the short ends of the waistband together. Leave a small opening for inserting the elastic.

Stitch the waistband right side to the inside of the trousers (wrong side) at the waist edge. Be sure to align the vertical seam of the waistband to the top of the crotch seam in the back.



Turn the waistband over the waist edge. Turn the seam allowance under and secure with pins around the right side of the trousers. Press lightly.





Stitch close to the fold (1/8 inch). Top stitch along the top of the fold of the waistband. Stitch a line along the middle. Begin and end this stitching line approx.  $\frac{1}{2}$  inch from the center back waistband seam. Thread the elastic into the resulting casings (channels). Cinch to the desired fit. Secure the elastic ends with a row of close tight zig zag stitches and tuck into the casings. Close the casing openings with straight stitch.



Your BERIT trousers are complete!



