

EMELY

Skirt Combo

Sewing instructions

These instructions are designed for beginners, the more advanced seamstress can of course employ her own techniques.



Photos



Description

SKIRT

Cut all the pieces according to the lists and layout.



Serge the top edge of the pocket piece , fold in over and sew.

Thread elastic through the resulting casing and secure on the seam allowance on the edge. The pocket should be gathered up to be approximately 3-4cm narrower than the skirt at the corresponding position.



Sew the pocket pieces onto the skirt pieces down the sides and across the bottom.



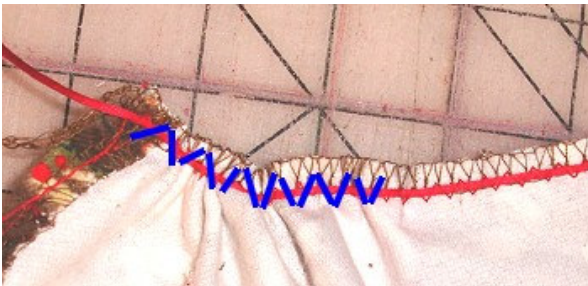
Sew all six skirt pieces together, making sure that the two pockets are at the sides. Press the seam allowance to one side and top stitch



Sew the narrow edges of the frill pieces together to form a ring. If the curved edge of the frill is required, sew the frill into one long strip rather than a ring.



Serge the bottom edge of the frill and hem.



Gather the frill. With lighter fabrics and a good serger, simply adjusting the differential feed should be sufficient.

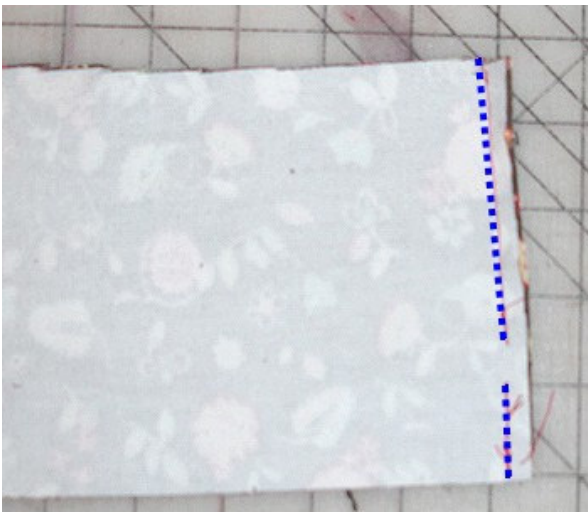
Otherwise you can for example use a wide zig zag over a thick cotton thread. Be sure NOT to sew onto the cotton thread but rather encase it with the zig zag. Then you can pull the thread to gather up the frill.



Gather the frill to fit the bottom of the skirt and attach. Press the seam allowance towards the skirt and top stitch.



Compare the length of the waist band with the waist of the skirt.



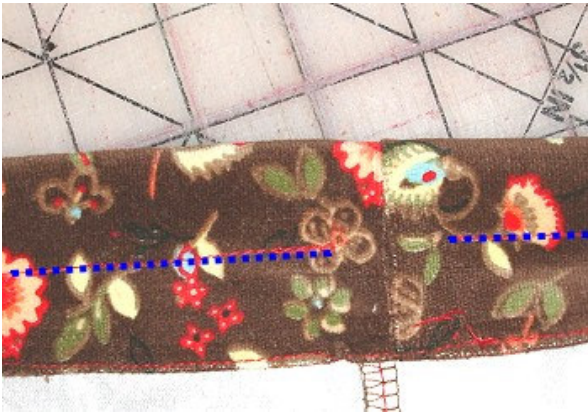
With right sides together sew the narrow sides of the waist band together leaving a small opening.



Lay the right side of the waist band against the wrong side of the skirt, pin and stitch.



Turn the waist band over so that the right side of the waist band AND the skirt are showing. Fold the seam allowance of the waist band under and pin



Top stitch and if you are using two thinner pieces of elastic sew an additional line in the middle of the waist band. Start and end this approximately 1 cm before the centre back seam. Thread the elastic through and close the hole by hand.



TOP

Fold the straps lengthways and fold the seam allowance inwards and top stitch so that you have two straps right side out.



Pin and sew the straps right sides together approximately 0.5cm from the side seam allowance onto the front and back bodice pieces. The straps must lie exactly opposite each other. See photo.



Close the side seams of the lining and bodice pieces.



Lay the bodice pieces and their linings right sides together (the straps will be in between the two pieces) and sew. Be careful not to catch the straps in the arm holes. Leave an opening of approximately 13cm at the centre back on one side so you can turn the bodice inside out. Trim and clip the seam allowance.



1. Turn the top inside out and topstitch.



Choose your closure for the back – buttons, snaps etc.

FINISHED!