

Princess Hoodie BEA

Photo Tutorial

These instructions have been written with the beginner in mind. Advanced sewists may, of course, use their preferred methods and techniques.



Illustration



Directions

Recommended fabrics include fleece, jersey, sweatshirt jersey and other stretch topweight fabrics.

Cut all pieces according to the piece list.

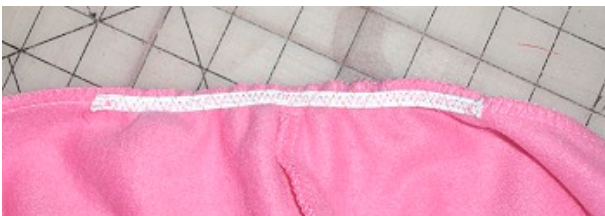
Stitch the hood pieces right sides together along the hood crown and the back.

Pin the two princess crown pieces right sides together. Stitch along the seam allowance, but leave an opening of approx. 10 cm (4 in.) for turning along the bottom. Trim and grade the seam allowance and notch the corners for a smooth turn.

If using thermal fleece, as fleece does not fray, you have the option of stitching wrong sides together and leaving the seam allowance unfinished.

Center a piece of elastic in the hood crown seam and stretch the elastic generously and pin. Attach using a three-step zig-zag stitch, easing the elastic as you go, to the fabric wrong side.

Turn the front edge of the hood, press and stitch to finish this edge and conceal the elastic.





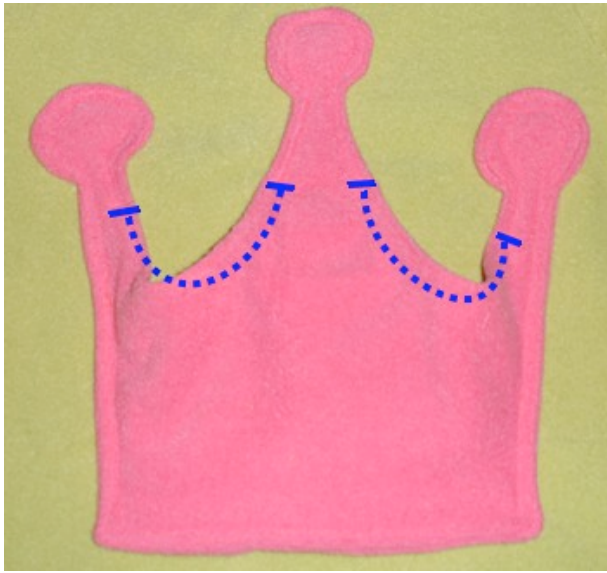
Here you see the elastic consealed.



Turn the princess crown pocket and press. Topstitch along the edge and close the opening used for turning.



Pin the princess crown pocket to the front. The princess crown should bulge out a tiny bit and thus be a bit three-dimentional.



Stitch the princess crown pocket to the front. Leave, however, the areas indicated in the illustration unattached. Secure the corners of the pockets with small bar tacks.



EITHER:

Attach the front piece to the front half of the sleeve and the back half of the sleeve crown to the back piece at the shoulder. In this way, you have a front piece with a right and left sleeve half, and a back piece with a left and right sleeve half.



Stitch the shoulder seam and the top sleeve seam in a single movement. Repeat for the other side.



OR:

Stitch the front piece to the back piece at the shoulders.

Stitch the front and back halves of the sleeves along the top.



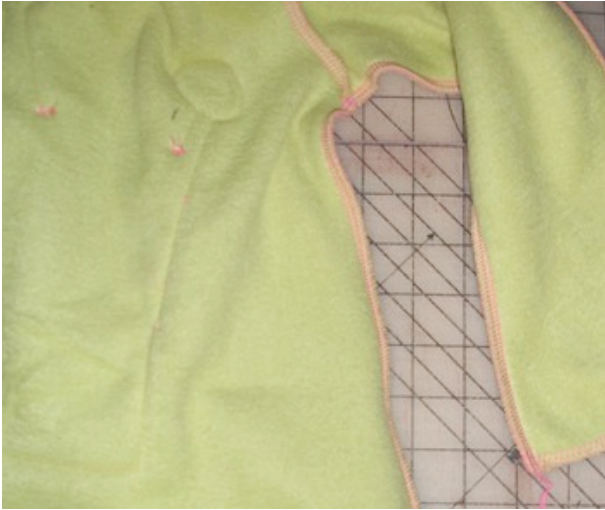
Stitch the sleeve to the bodice at the shoulder.



Center the hood at the back and front. Overlap slightly the right and left front corners of the hood at the throat. Baste stitch to secure the placement at the two places indicated in the illustration.



Attach the hood using a stretch stitch, such as the three-step zig zag stitch.



Stitch the side seam and the lower sleeve seam in a single movement.

Hem the cuffs with a stretch stitch.

Your BEA hoodie is ready for your princess!