

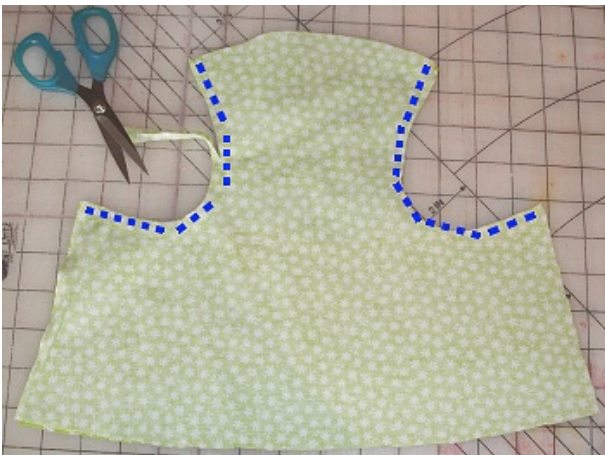
# Dress CELINA

Putiton-Kinderdesign

## Photo Tutorial



Cut all pieces. Be sure to include a seam allowance. Please note, the pattern pieces on the sheet do not include a seam allowance. Finish all edges with an over-edge cast stitch.



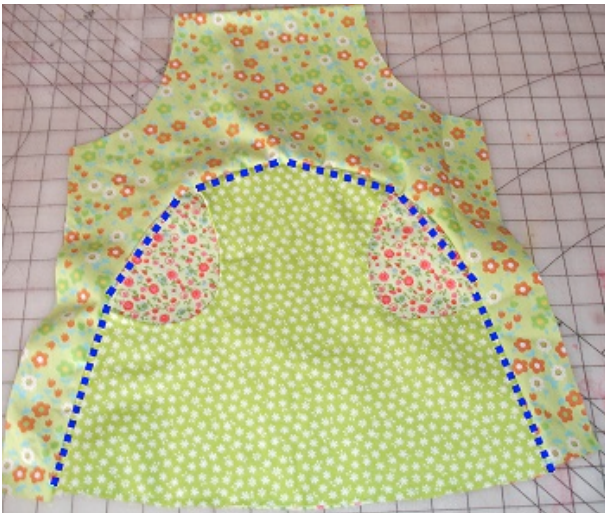
Pin the pocket bag pieces right sides together to the center panel. Stitch. Trim and grade the seam allowance and turn. Press the seam and topstitch.



Pin the back piece in place and attach along the seam allowance.



Center the front panel with the front piece and pin.



Stitch the front panel to the front half. Begin at the center top and stitch to the left toward the hem. Repeat for the right side. Do not pull the fabric during stitching.



Press the seam allowance up. Nocht the seam allowance for a smooth turn, if necessary.

Topstitch the seam.



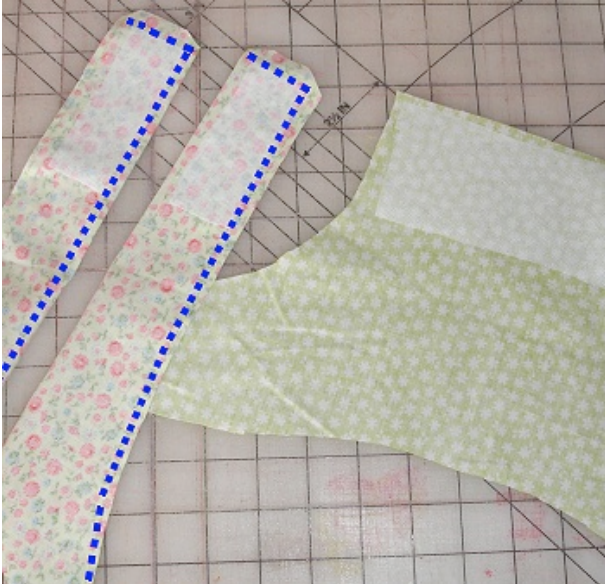
Stitch the back right side to the back left side, right sides together. Press the seam and topstitch.



Pin the lower hem panels to the front and back pieces, beginning at the center. Stitch the hem panel pieces to the front and back pieces, again beginning at the center and stitching to the left and then to the right.

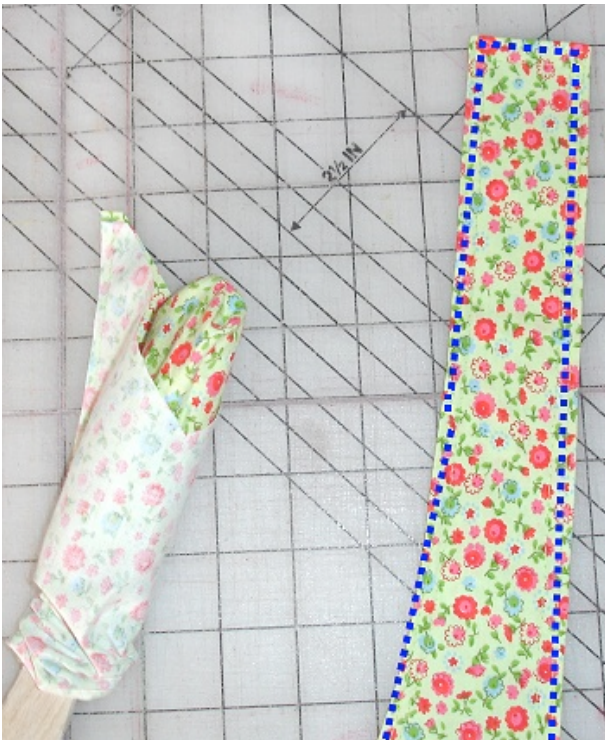


Press the seam allowances up and topstitch.



Fold the straps lengthwise, right sides together and stitch the smaller end and the side. Notch the corners and trim the seam allowance for a smooth turn.

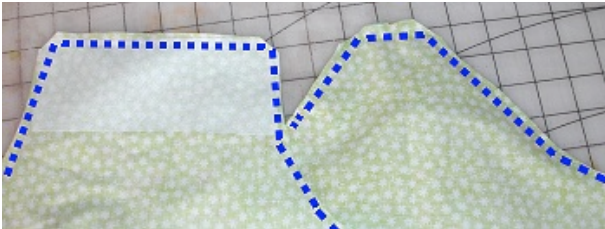
Apply fusible interfacing to the ends of the straps and to the wrong side of the front facing.



Turn the straps and topstitch.



Pin the open end of the straps to the back piece. The straps should be hanging down. Lift and straps and make a quick check to see if the straps are positioned correctly. Attach the straps at the seam allowance of the back piece.



Stitch the front and back facing pieces to the front and back pieces **only** along the top and front, not along the sides. Notch the corners and trim the seam allowance.



Stich the side seams of the front facing to the back facing pieces and the front dress and back dress pieces in a single movement.

Innenpassen nach innen wenden und von außen schmalkantig absteppen.



Stitch a small casing under the arm. Insert a piece of elastic and attach with a bar tack at one end. Cinch to the desired fit, trim and secure the other end of the elastic with a bar tack.



Hem the dress. Stitch buttonholes, center the buttons under the buttonholes and attach buttons.

Embellish as desired.

Your CELINA dress is complete!