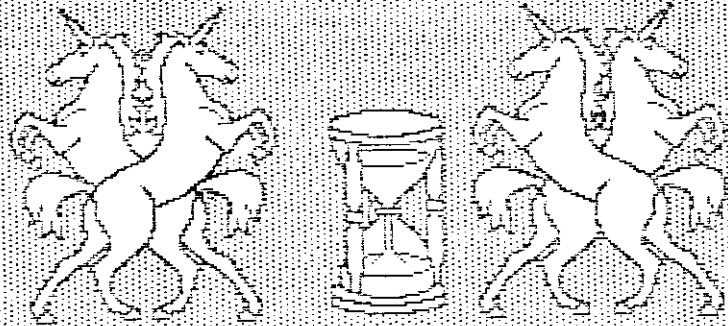


13 March



A.S. XXII

Uoll 15u.2

Greetings once again from the Shire
 Chronicler, Shou Hoe, The Westward
 Wanderer.

to speed. If you have questions about
 your armour being legal, see me on
 the field. I will let you know what
 you will need in order to get ready.

Seneschals Corner

Lady Maria de Estrela

Announcements !!!

The next Barional will be in our
 beloved shire. The date has been set
 for the last weekend of July, 30 and
 31st. This event will be one of the
 best ever in the Isle and we are
 looking for you to have a very good
 time.

**Welcome back
 Corrance Cuenaobhie**

from your travels to the Known
 World. You were missed much by the
 people of this Shire.

There are, however, some arrange-
 ments that have to be made. The
 Autocrates have stepped forward and
 the planning is in effect. From what
 we have seen so far this is going to
 be a grand event. The Feastocrat has
 already begun their plannings of the
 menus. What we will be needing is for
 volunteers for the housing of
 visiting Lords and Ladies. Some one to
 show our guests some of the sites of
 our fair Isle, and help in the
 construction of the area (the
 pavilions, feast hall, fighters area
 and ect, ect.) For futher information
 on what you can do to make this
 event be the BEST in the Far West
 contact Shou Hoe at the next
 fighters pratice or by far speaker,
 333-1575, you can leave message on
 his magical servent in the event
 that he is not in when you call (in
 other words his answering machine.)

Teachers' Day

Teachers' Day was held on the 4th of
 March A.S. XXII. The members of the
 Shire who attended were: Lady Maria,
 Robert' de fay Camp, Lord Shou Hoe,
 Balistar, Catrine, and Thomelin. The
 fine effort that these individuals
 put forth made the Teachers' Day
 successful. Well done.

You will be informed of all up date
 as they come in. Thank you for your
 assistance.

Awards

The following people received
 awards from the last Barional Event.

Marshalls Speak

The upcoming Barional Event is not
 far away. Now is the time to make
 sure that all of your armour is up

- | | |
|-----------------|--|
| Ealachs Facl | Order of the
Empty Shell |
| Jevon Fairbairn | Order of Oriental
Dragon (Sciences) |
| Shou Hoe | Attic Helm
(Fighters' Award) |
| Robert' fa Camp | Order of Bouget |

The awards mentioned on the last page were issued by Baroness Sir Brude.

The following awards were given by Barron Jehan.

Lady Marie Order of Bouget
 (Service to the
 Barony)
 East Court, Garb

Robert' fa Campu Attic Helm
 (Fighters' Award)
 Best Tourny
 Garb

In the following pages will be the Flamshell Gauntlets that people have be asking about. These are the ones that Hilary of Serendip wrote about in one of the earlier Tourn. III. For you Fighters that need a pattern it is enclosed. Will your hands be ready for the up coming Baronial? This may help.

Also for those of you who wanted information about Banners. This is in the following page. This information comes from the Pleasure Book. Would it be nice to see your banner up during an event, or during Court in the Feast Hall?? I think that it would. Good luck to you in the up coming events.

Event Notice

Shire Champion -- Will be

held the first weekend of April. Autocrat is Thomelin, Feastocrat is Katherine. Other than just fighting there is going to be a Favors Contest and an Armor Contest.

Baronial -- Will be held on

the 30th and the 31st of July. Autocrat is Thomelin and Show Hoe is the assistant autocrat. There will be a Dancing Contest as well as a Banner Contest.

You will be kept up to date as time goes on.

**We need to have more
submissions to this
newsletter. Please give.**

This is the Shield, Published by and for the members of the Isle of the Blue Mist, of the Society for Creative Anachronism, Inc. It is available from the publisher by writing to James E. Chick, PSC # 2 Box 10883, APO San Francisco, CA, 96367. This is not a publication of the Society for Creative Anachronism, Inc. and does not delineate SCA policies.

Clamshell Gauntlets

by Hilary of Berendip

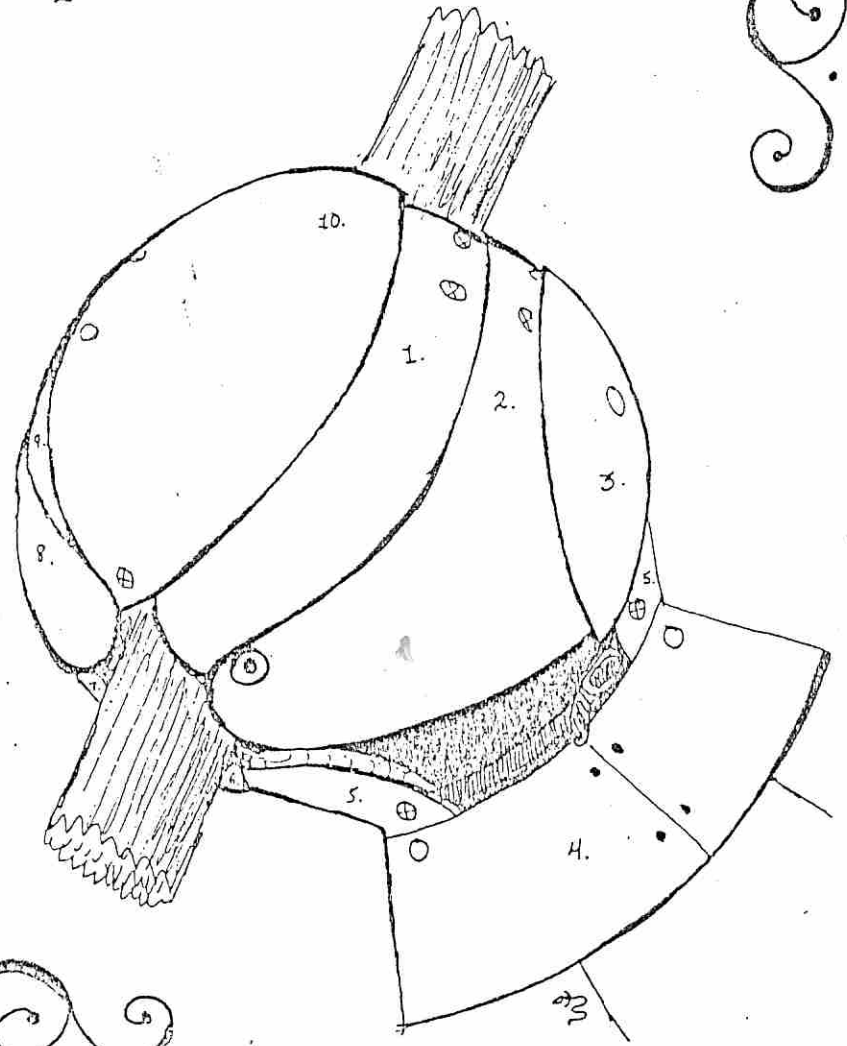
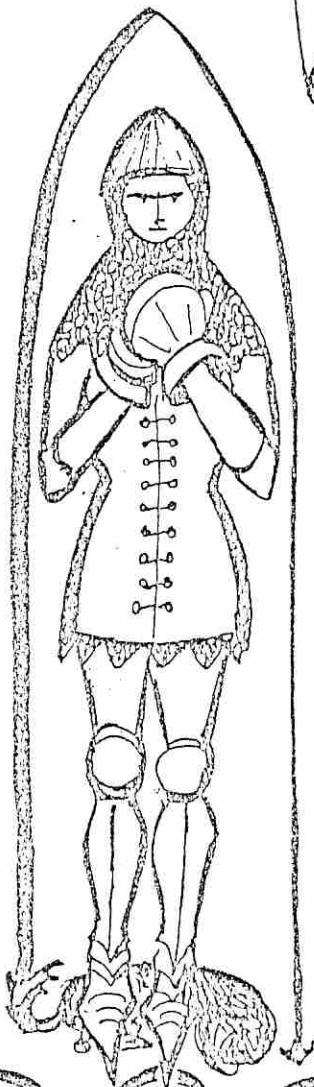
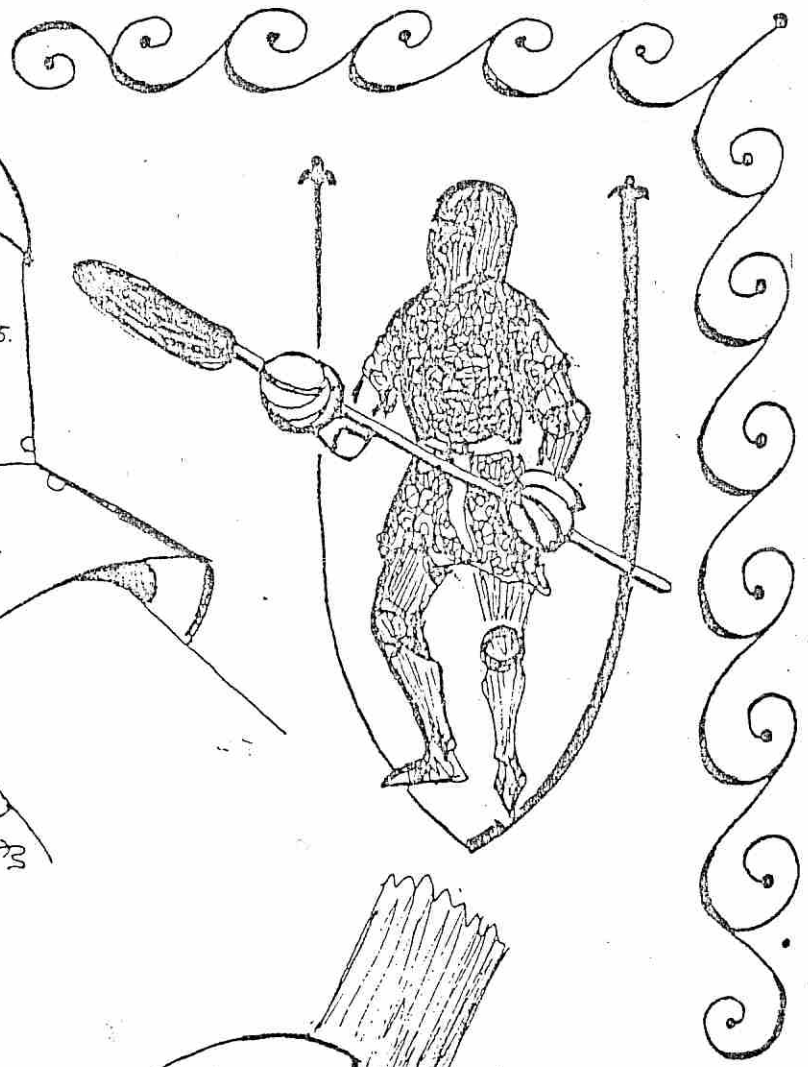
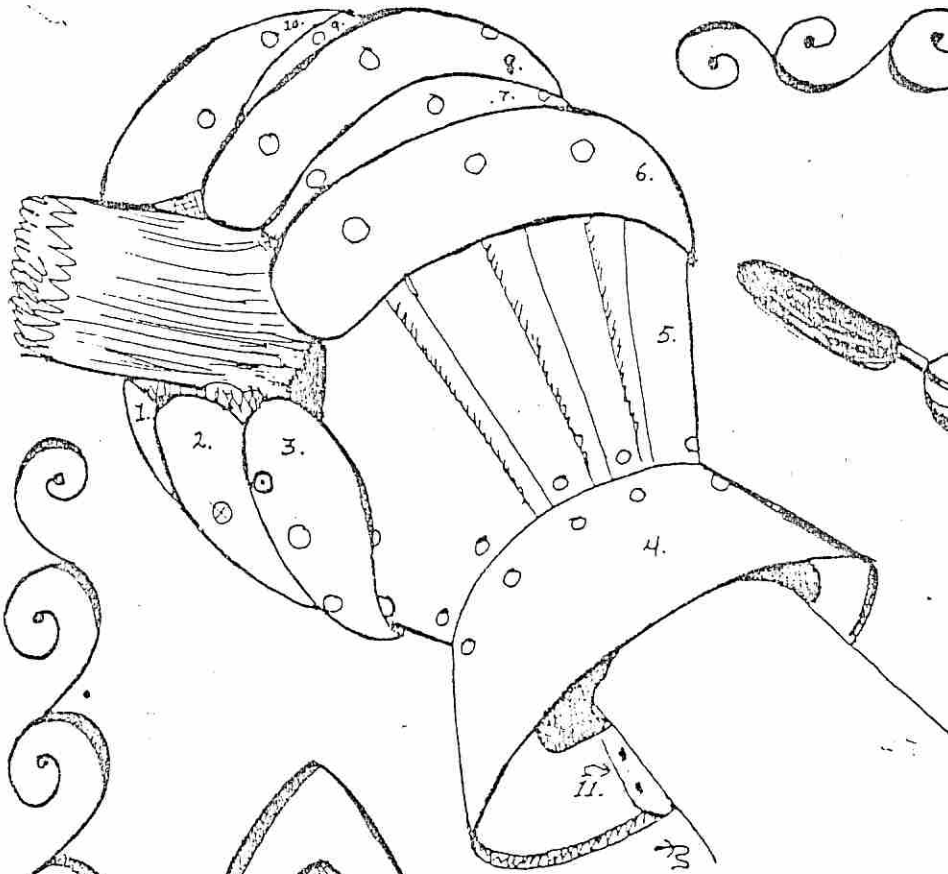
For maximum safety with polearms and hafted weapons, enclose your hand in a globe of steel. Here is a gauntlet design with thumb plates that arch across the palm of the hand and brace against the haft on either side. It comes out looking like an animated clamshell, and I've never seen anything like it in any museum or book of armor – but it provides such a happy combination of protection and flexibility that I find it hard to believe I'm the first to try it . . .

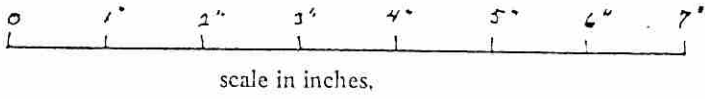
I used 18-gauge stainless steel, and fastened the plates together with 5/8" medium-weight leather straps. The finished gauntlet weighs just under 2 pounds. It's padded with layers of 1/8" closed-cell foam build up to contour along the fingers and back of the hand. There's some foam along the thumb straps as well, but the primary padding for the thumb and wrist is made of thick wool blanketing covered with cotton and mounted inside the work glove worn with the gauntlet.

Here are a few construction notes – not many; if you feel you need much more detail, you should probably make a few larger and simpler pieces of armor before trying this.

- Patterns are drawn 1/2-scale, which means they have 1/4 the area of the originals. When you expand them, they will look huge – but this is deceptive. My hands are small for a fighter – 7 1/2" from heel to fingertip, 7 1/4" around the knuckles, and 6 3/8" around the wrist. The pattern shown here makes a gauntlet which fits comfortably close on me, and is nearly impossible for most men to squeeze a hand into. After you've adjusted the patterns for your own hand, make a trial gauntlet out of something stiff but easy to bend (say, a disposable roasting pan) to be sure you get the right size and put the rivet holes in the right places.
- The various dots on the patterns stand for different kinds of rivet and strap arrangements:
 - = tinnern rivet holding plates in tight bond
 - ⊙ = tinnern rivet forming hinge between plates
 - = leather rivet holding plate to internal strap
 - ⊗ = leather rivet holding plate to strap around fingers
 - ⊕ = leather rivet holding plate to internal strap and also to one of the straps around fingers, thumb, or wrist.
- Shaded areas on the patterns wind up *underneath* neighboring plates when the gauntlet is complete (except the outside edge of the cuff, which is rolled under itself).
- The rolled edge of the cuff should rest flat – touching your worktable at all points – once the cuff is bent into a cone.
- Plates 1, 2, 6, and 10 must have very deep compound curves, and most of the others need some compound work. The curves strengthen the metal, permitting use of a relatively light gauge. Even so, if your hands are much bigger than mine, consider using 16-gauge steel on plates 6, 8, and 10, and possibly on plate 2 as well.
- The dotted lines on the hand plate (5) show where to raise reinforcing ridges in the metal.
- The thing that looks like a fat-toothed comb holds the cuff and the hand plate together. The 'teeth' flare out into the cuff. Make out of leather.
- The hand plate will probably need to be flared out around the base of the thumb and the blade of the hand after you fasten it to the cuff.
- The inside plates – the ones with lots of shading on the pattern – have to be riveted on before their outside neighbors. Put the whole thing together with brads to test it first.
- The straps holding the gauntlet to your hand must be long enough to include the padding and work glove without strangling your fingers or thumb. Make sure they're the right length before you replace the brads – there's no room in there for buckles, rivets, or knots.

This is a fairly involved project, but not all that difficult. Just take it slow, and bear in mind the passive hostility natural to inanimate objects. . . .





scale in inches.

