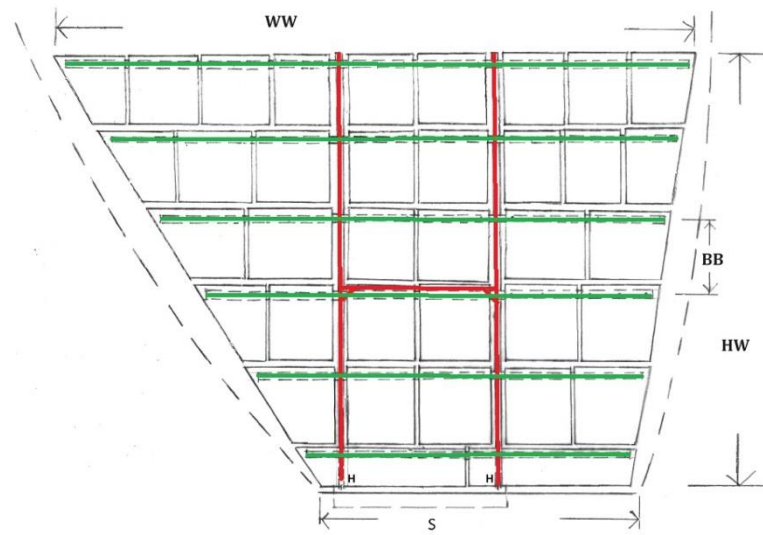
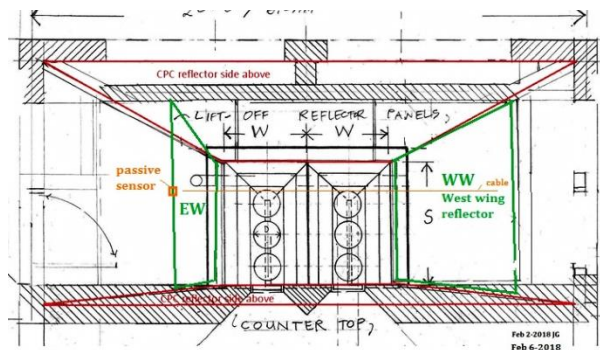


FEB 6-2018 JG

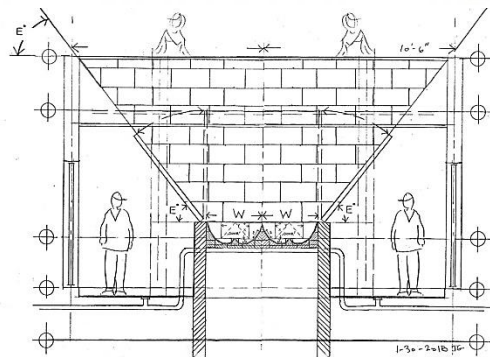
Green: bamboo poles



FEB 6-2018 JG



Feb 2-2018 JG
Feb 6-2018



Two 3-cooker vessel involute modules as a target for the Exterior CPC thru-wall-reflector kitchen project

The relaxed tracking E and W wing reflectors are connected by a string-cable. Anodized aluminum sheet bolted to horizontal bamboo poles is fastened to a slim metal frame hinged (H) at S. A passive sensor is at the top of the east wing reflector with a driver. Reference is the Helmholtz, SPS, passive sensor and driver options.

Feb. 6, 2018 Joel H. Goodman