

SK 1.4 Annex B Drawings of SK 1.4

page 1

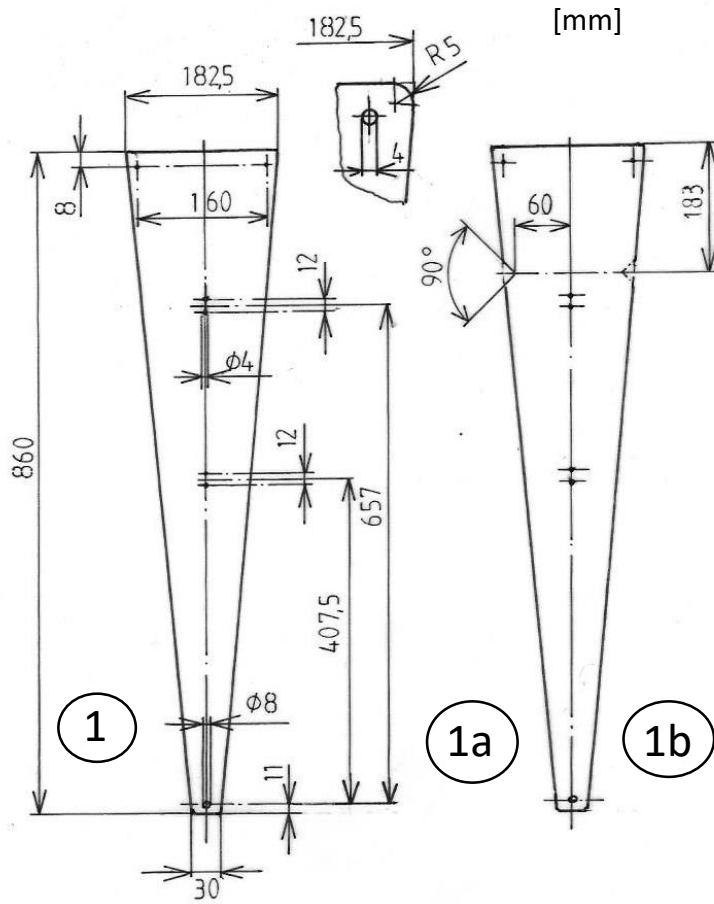


Fig. 1: Reflector Sheet (1) without lateral cutouts, (1a) with cutout on the left, (1b) with cutout on the right; rounding corners of pressed kit with flat file

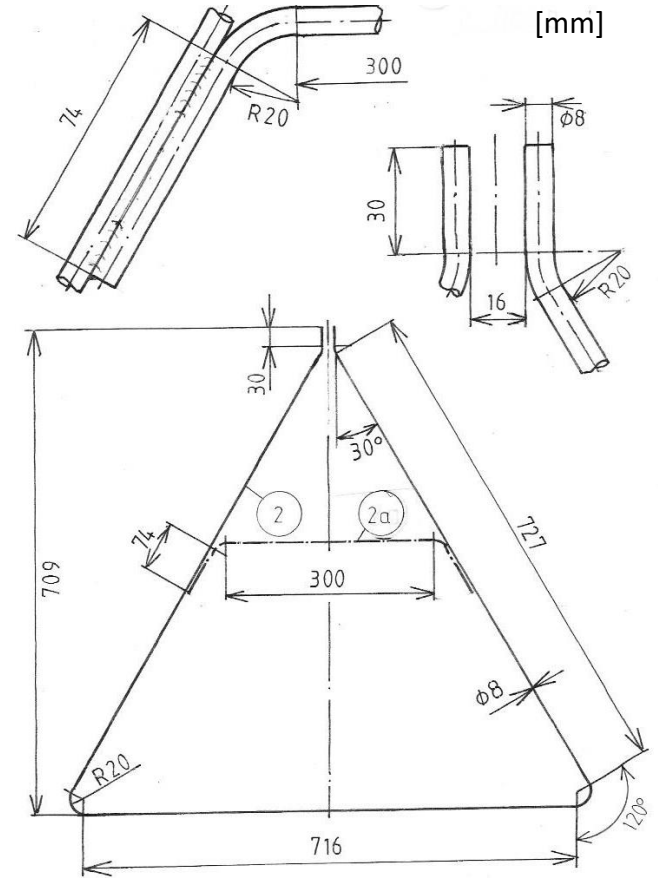


Fig. 2: Vertical Stand (2) and welded-on Stiffener (2a); all parts in one plane

SK 1.4 Annex B

Drawings of SK 1.4

page 2

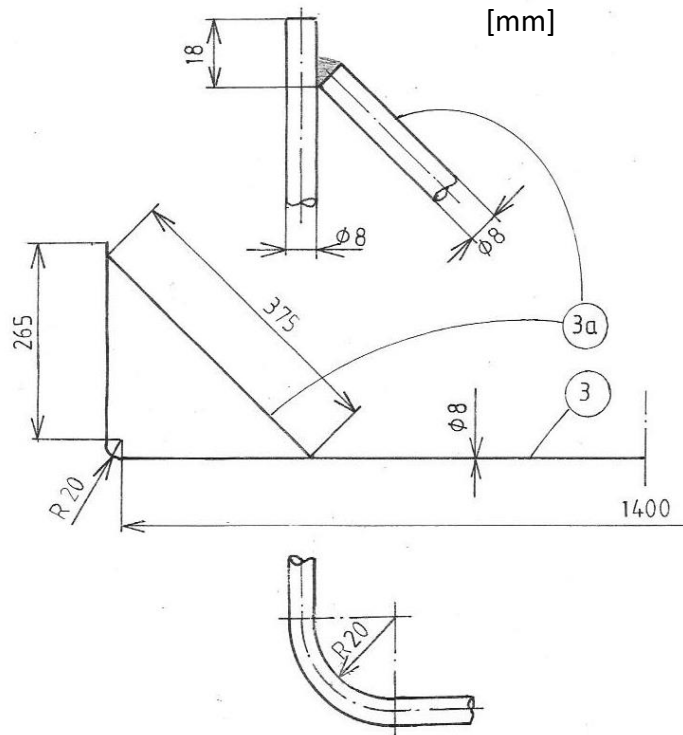


Fig. 3: Basis (3) and welded-on Basis Stiffener (3a) for connection to the Vertical Stand (2) with two Rope Clamps (20) on each side, or for welded connection

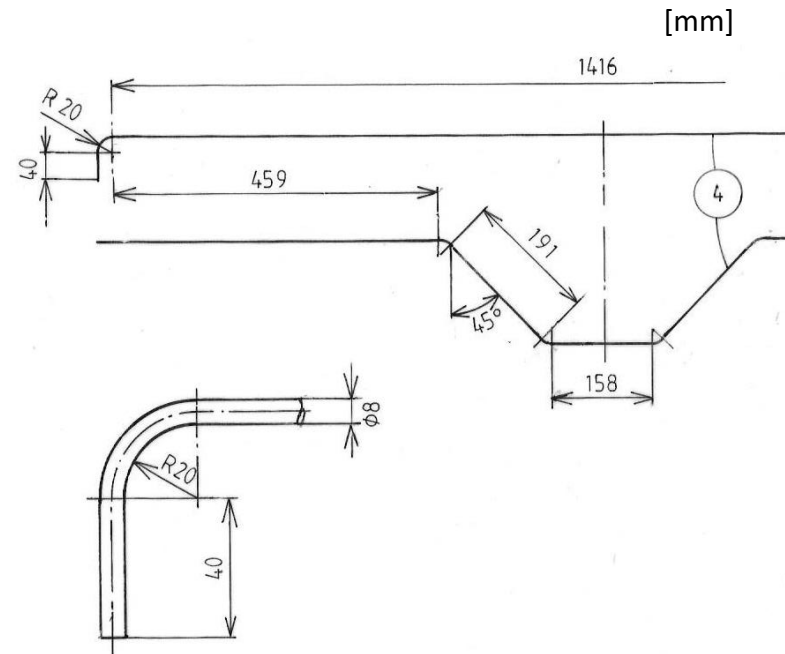


Fig. 4: The axis consists of two equal Axis Halves (4); their ends are bent perpendicular to the bends for the Pot Support (9) in the middle of the axis

SK 1.4 Annex B
Drawings of SK 1.4
page 3

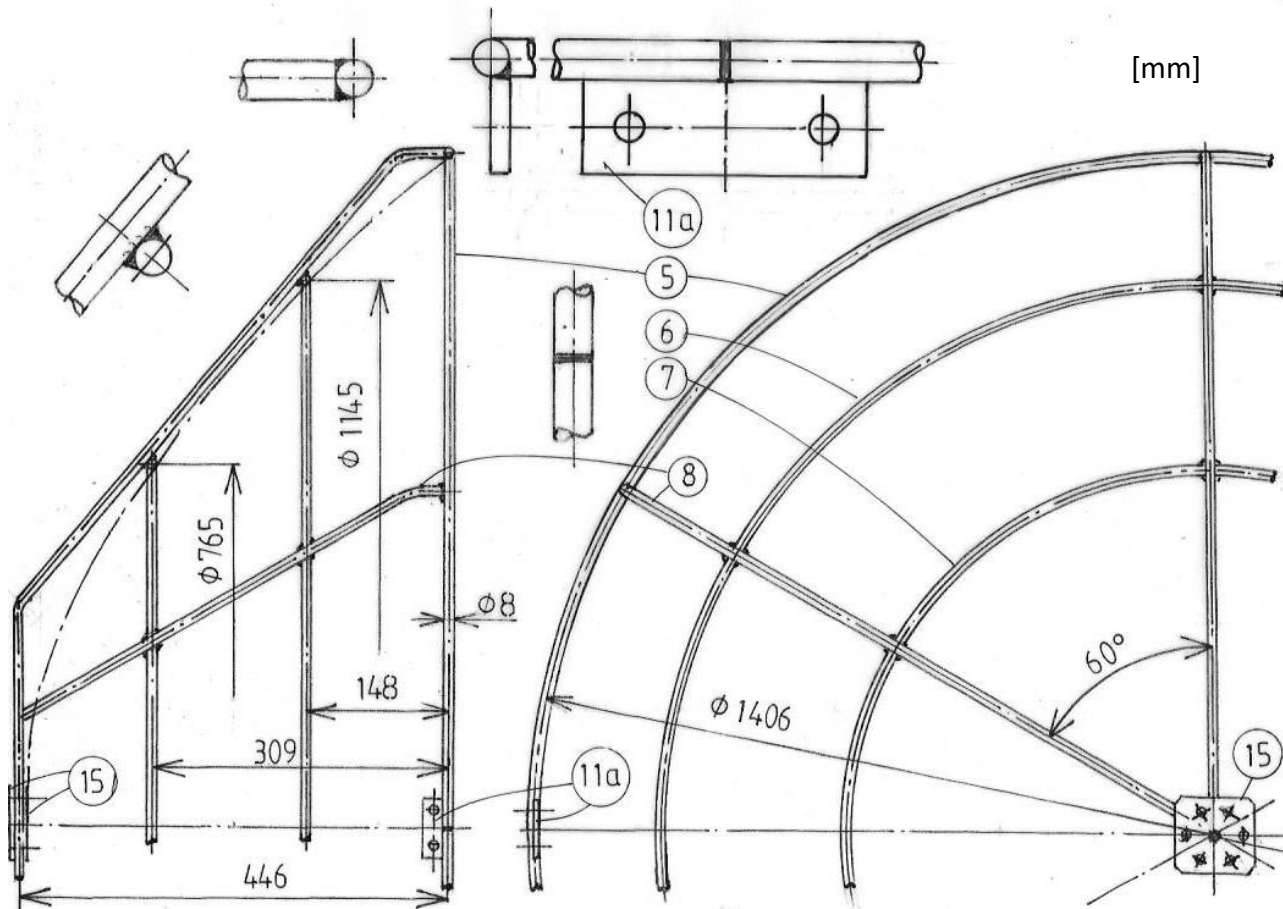


Fig. 5: Main Ring (5), Second Ring (6), Third Ring (7), Ring Connector (8), Fastener (11a) for Bearing Plate, Central Connection (15); the two Fasteners (11a) are welded opposite on the ends of the Main Ring Halves in a 30° -position to the Ring Connectors (8); Central Connection (15) consists of two plates; they are applied in the Welding Device (D9).

SK 1.4 Annex B
Drawings of SK 1.4
page 4

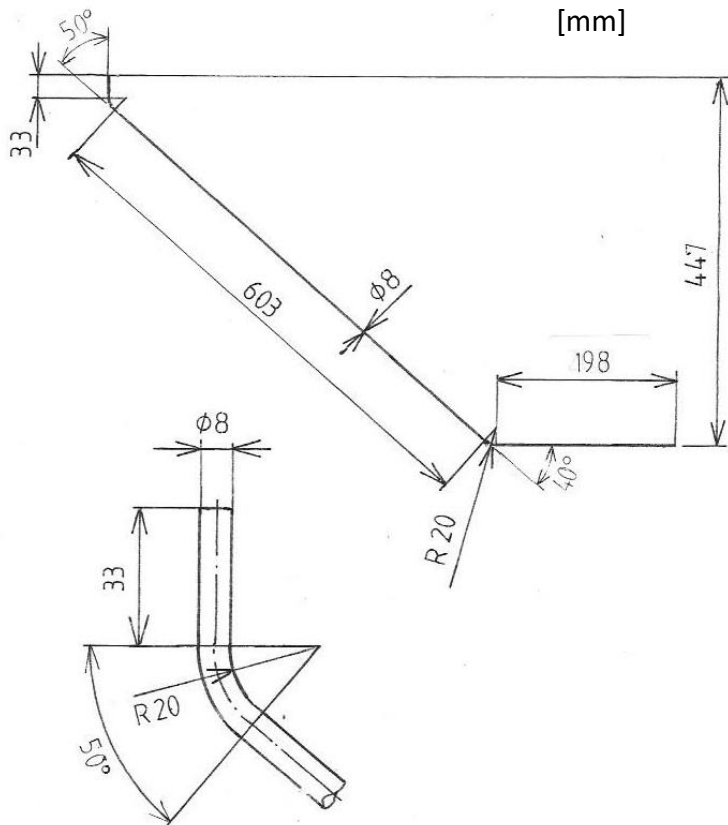


Fig. 6: Ring Connector (8), bent in one plane

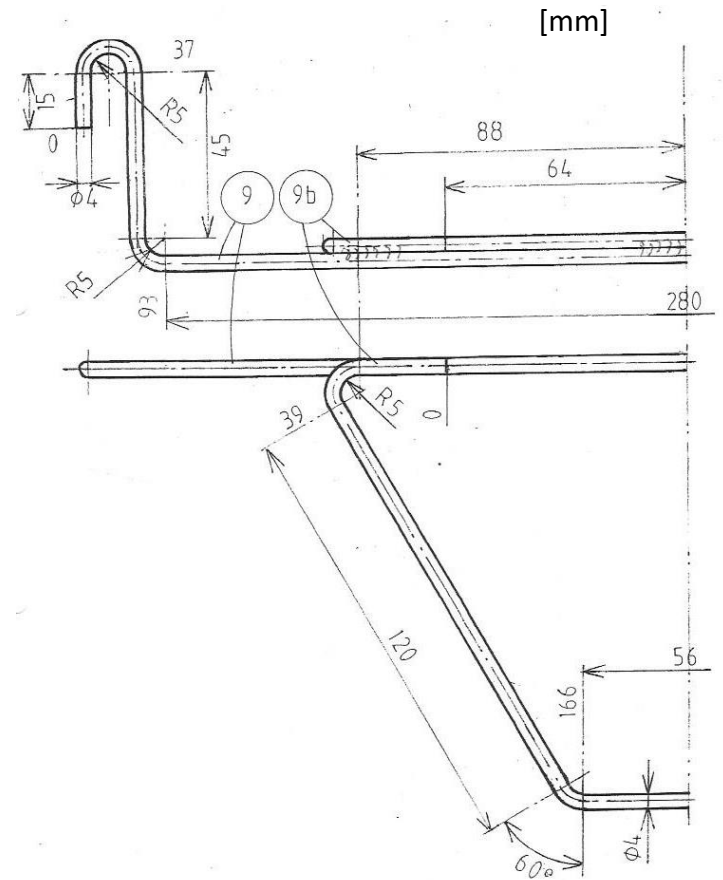


Fig. 7: Pot Support (9) and Triangle (9a) welded together

SK 1.4 Annex B

Drawings of SK 1.4

page 5

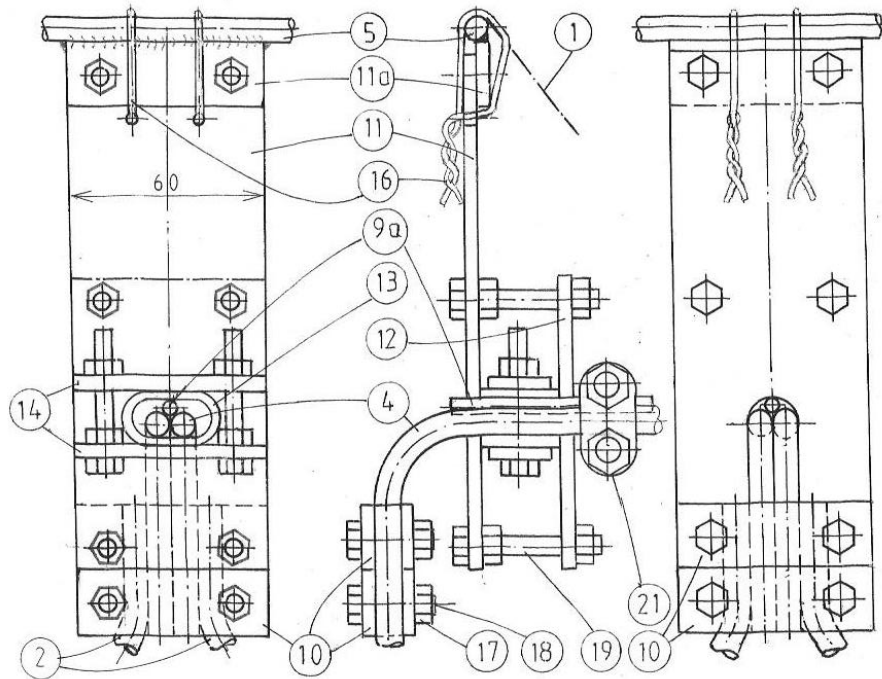


Fig. 8: Friction Clutch with Bearing Plate (11), Pressure Plate (12), Friction Ring (13), Friction Ring Holder (14), and Rope Clamp (21); For details of the connection of Axis (4) with the Vertical Stands (2) see Fig. 8a.

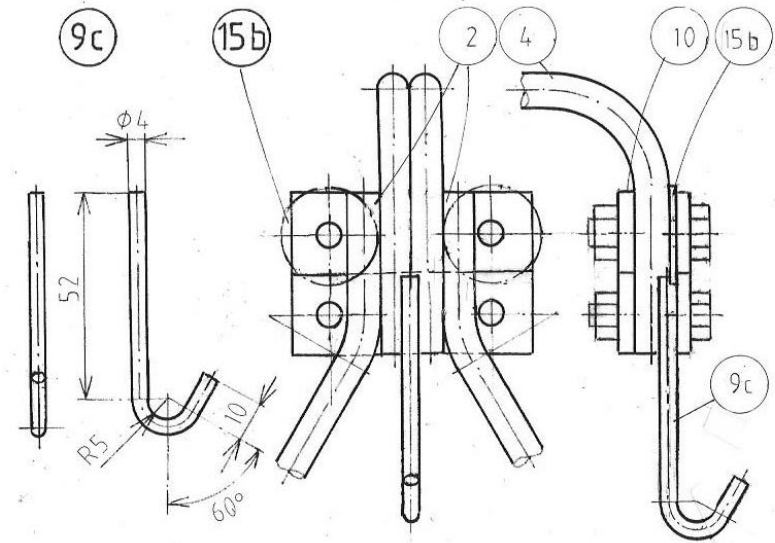


Fig. 8a: Washers (15b) enlarge the distance between the upper Axis Fasteners (10) for easy introduction of the ends of Axis (4). Hook (9c) enforces the connection of the Axis (4) with the Vertical Stand (2).

SK 1.4 **Annex B**
 Drawings of SK 1.4

page 6

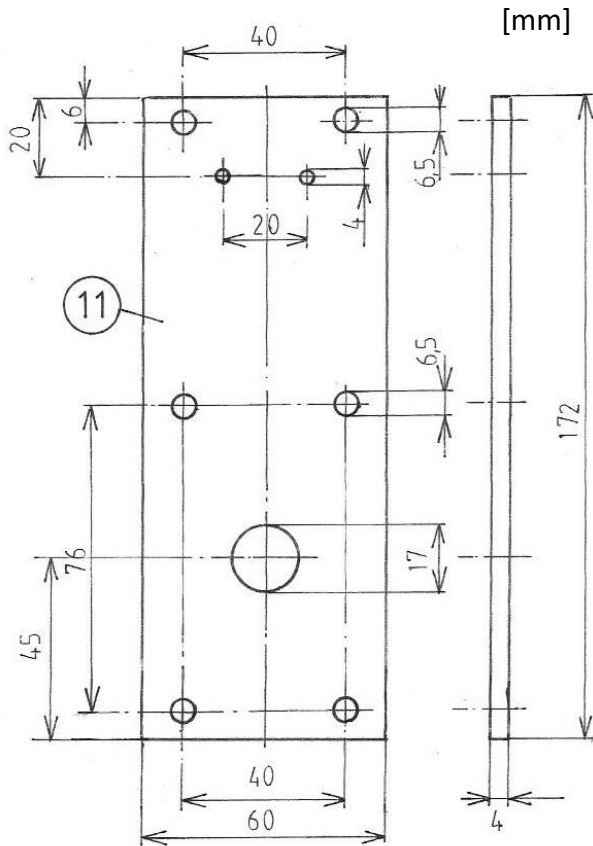


Fig. 9: Bearing Plate (11)

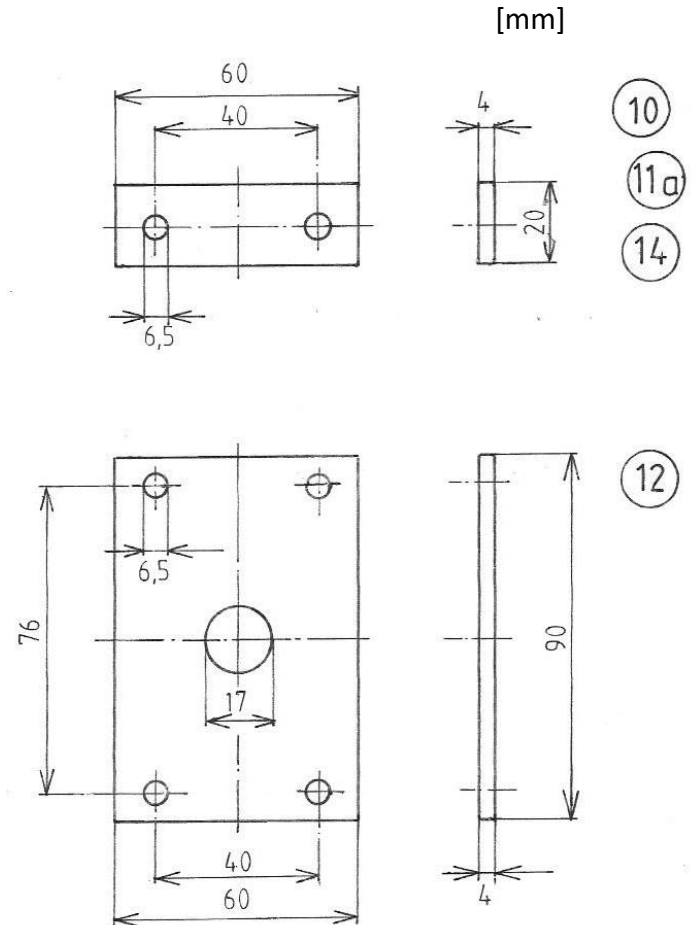


Fig. 10: Axis Fastener (10), Fastener for Bearing Plate (11a), Friction Ring Holder (14), and Pressure Plate (12)

SK 1.4 Annex B

Drawings of SK 1.4

page 7

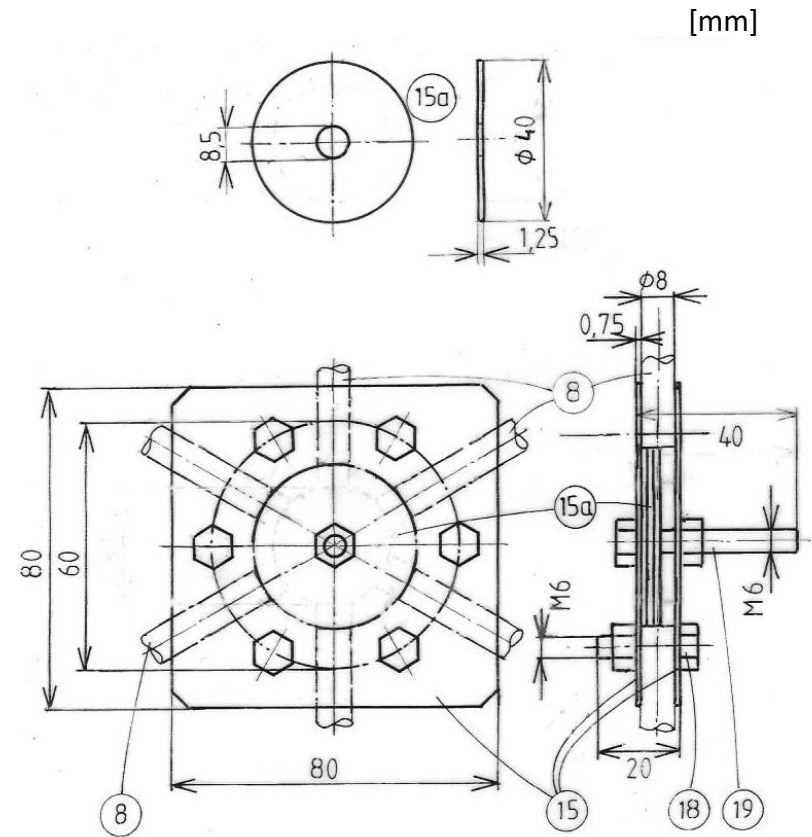
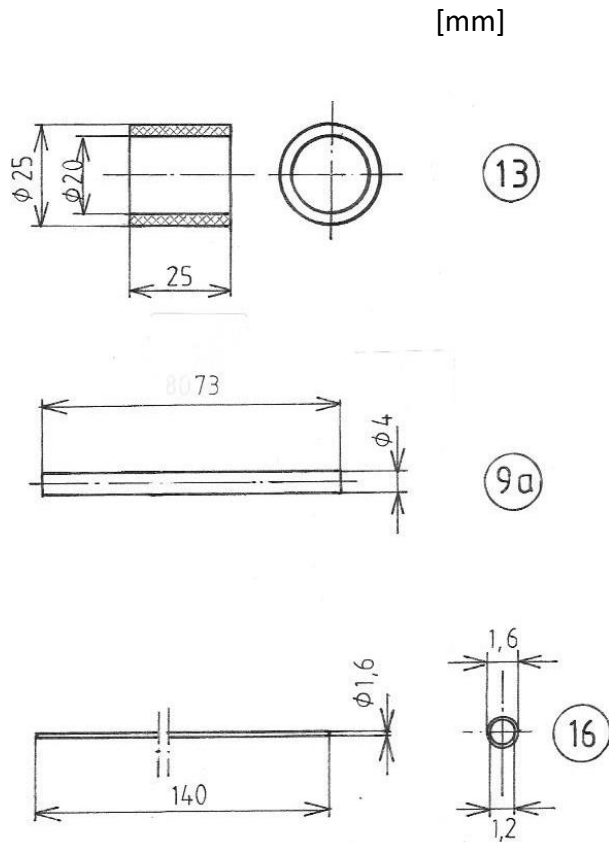


Fig. 11: Friction Ring (13) made from polypropylene tube,
Axis Strengthener (9a), Wire (16) from aluminum with plastic
cover

Fig. 12: Central Connection (15), three Washers (15a);
(Washer (15b), see Fig. 8a, has a diameter of 24 mm)

SK 1.4 Annex B

List of Parts of SK1.4

List of Parts SK1.4 03/2018														
Pos.	Number of Pieces	Name	Ring Diameter	Date of drawing./ Standard	Material	Thickness or Diameter	Width	Length	Total Length of Parts	Total Length Round Material	Cross section	Weight per Piece	Total Weight	
			mm			mm	mm	mm	mm	m	mm ²	kg	kg	kg
1	20	Reflector Sheet		3/2018	high reflecting alu	0,5	108,3	860				0,126	2,514	Reflector
1a	2	Reflector Sheet with axis passage left		3/2018	high reflecting alu	0,5	108,3	860				0,126	0,251	
1b	2	Reflector Sheet with axis passage right		3/2018	high reflecting alu	0,5	108,3	860				0,126	0,251	3,02
2	2	Vertical Stand		3/2018	round steel	8		2356	4711		50,3	0,924	1,847	Structure
2a	2	Stand Stiffener		3/2018	round steel	8		498	997		50,3	0,195	0,391	
3	2	Basis		3/2018	round steel	8		1999	3999		50,3	0,784	1,568	
3a	4	Basis Stiffener		3/2018	round steel	8		375	1500		50,3	0,147	0,588	
4	2	Axis		3/2018	round steel	8		1689	3378		50,3	0,662	1,324	
5	2	Main Ring half	1406	3/2018	round steel	8		2209	4417		50,3	0,866	1,732	
6	2	Second Ring half	1145	3/2018	round steel	8		1798	3595		50,3	0,705	1,410	
7	1	Third Ring full	765	3/2018	round steel	8		2402	2402		50,3	0,942	0,942	
8	6	Ring Connector		3/2018	round steel	8		872	5230	30,229	50,3	0,342	2,051	11,85
9	2	Pot Support		3/2018	round (inox) steel; (alu)	4		466	932		12,6	0,046	0,091	Pot Holder
9a	2	Axis Strengthener		3/2018	round (inox) steel; (alu)	4		80	160		12,6	0,008	0,016	
9b	1	Triangle		3/2018	round (inox) steel; (alu)	4		388	388		12,6	0,038	0,038	
9c	2	Hook		3/2018	round (inox) steel; (alu)	4		80	160	1,640	12,6	0,008	0,016	
10	8	Axis Fastener		3/2018	steel	4	20	60			80,0	0,037	0,300	
11	2	Bearing Plate		3/2018	steel	4	60	172			240,0	0,322	0,644	
11a	2	Fastener for Bearing Plate		3/2018	steel	4	20	60	120		80,0	0,037	0,075	1,18
12	2	Pressure Plate		3/2018	steel	4	60	60	120		240,0	0,112	0,225	Friction Clutches
13	2	Friction Ring (20x25)		3/2018	black plastic tube PP	25	2,5	25	50		176,7	0,004	0,009	
14	4	Friction Ring Holder		3/2018	steel	4	20	60	240		80,0	0,037	0,150	0,38
15	2	Central Connection		3/2018	steel	0,75	60	60	120		45,0	0,021	0,042	Fastening Elements
15a	3	Washer 40 x 8		3/2018	galvanized steel	40	1				1256,6	0,010	0,029	
15b	4	Washer 24 x 8		DIN 125	galvanized steel	24	2				452,4	0,007	0,028	
16	96	Wire		3/2018	alu with plastic cover	1,6		140			2,0	0,001	0,073	
17	42	Nut M6		DIN 934	galvanized steel							0,005	0,210	
18	20	Screw M6 x 25 (thread till head)		DIN 933	galvanized steel	M6						0,010	0,200	
19	13	Screw M6 x 40 (thread till head)		DIN 933	galvanized steel	M6						0,01	0,130	
20	9	Rope Clamp 8mm (see photo, Annex E)		DIN 741	galvanized steel							0,032	0,288	
21	2	Rope Clamp 10mm (see photo, Annex E)		DIN 741	galvanized steel							0,057	0,114	1,11
22	1	Disc for Shadow Indicator (s. Annex E)		spring cover	white plastic (electr.)	70						0,008	0,008	0,01
												total kit:	17,55	17,55
													kg	kg